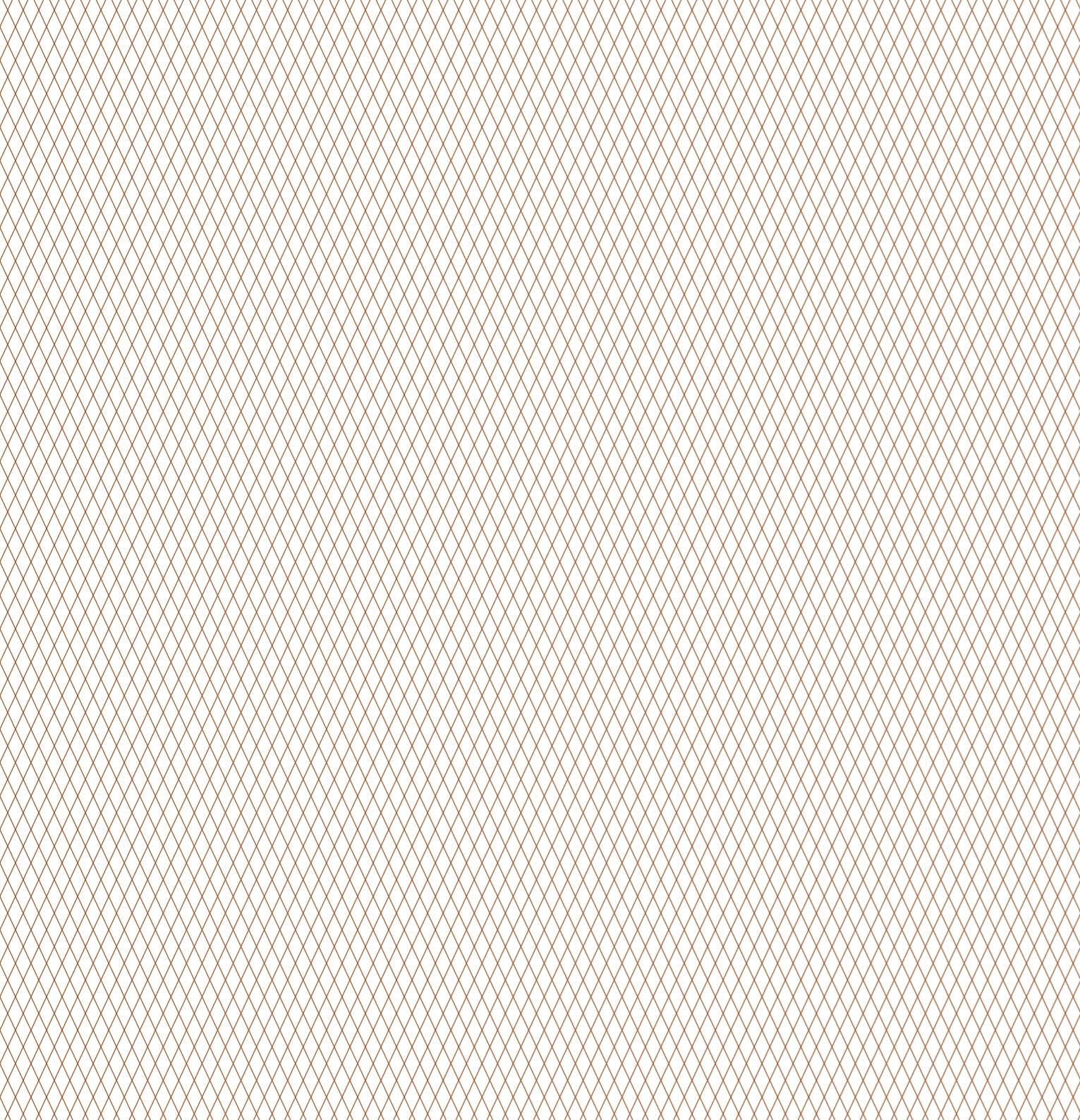




S A A I

RESORT & RESIDENCE

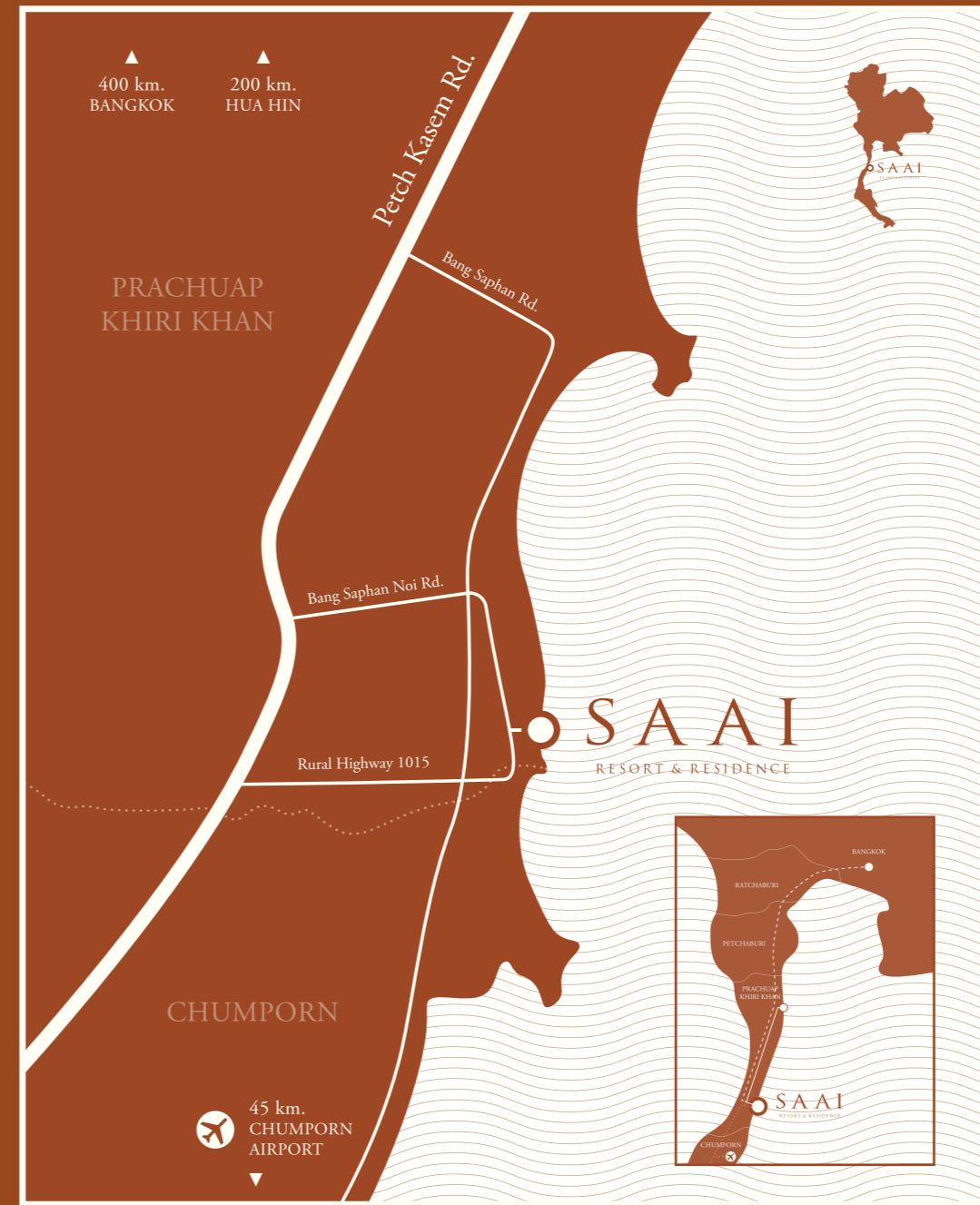




THE REALM OF GOLDEN DREAM

A prosperous land from our ancestors with a long private beach is being developed into the exclusive beachfront villas. The SAAI concept will showcase a touch of Asian-Tropical style that can perfectly blend with nature, giving you a splendid sense of living at the very edge of the horizon and the sea.

SAAI offers a truly beachfront community with only 31 private pool villas on 40 rais of land. Our residence offers two and three bedrooms from single-level to duplex with its own private pool. SAAI area sits along a mile of golden sand, overlooking to the panoramic sea view on the private beach in Prachuap Kiri Khan province.



DESTINATION

Located on the most peaceful beach in the southernmost of Prachuap Khiri Khan province. Chumphon airport is the nearest airport to SAAI residence. It takes 1-hour flight from Bangkok and 30-minute drive to discover a hidden gem of the gulf of Thailand.

SAAI is 400 kilometers and delightfully remote yet only a 1-hour flight from Bangkok. Located in the south of Prachuap Kiri Khan Province along the Gulf of Thailand. SAAI area is surrounded by coconut fields and our private beach presents a sense of calm and serenity.

- From Bangkok to SAAI | 400 km.
- From Hua Hin to SAAI | 200 km.
- From Chumphon Airport to SAAI | 45 km.



PROJECT INFO & MASTER PLAN

Developer Name : LIV ASSET Co.,Ltd.
Project Location : Sai Thong, Bang Saphan Noi, Prachaup Khiri Khan, Thailand
Land Area : Approximately 36 Rai
Project Type : Private Beachfront Pool Villas for Sale
Total Units : 31 Villas

TYPE OF VILLA

Private Residence

<i>Type A</i>	3 Bedroom Beachfront Pool Villa	7 Units
<i>Type B</i>	3 Bedroom Seaview Pool Villa	5 Units
<i>Type C</i>	2 Bedroom Seaview Pool Villa	9 Units

Resort Residence

<i>Type D</i>	Duplex Seaview Pool Villa	8 Units
<i>Type E</i>	Duplex Beachfront Pool Villa	2 Units

Master Plan	1	Parking	4	Lobby	7	SAAI Villa Type C	10	Pool Bar
	2	SAAI Vilion	5	SAAI Villa Type A	8	SAAI Villa Type D	11	Main Pool
	3	Staff & Service	6	SAAI Villa Type B	9	SAAI Villa Type E	12	Specialty & Buffet





TYPE A
Total Area 587 SQ.M.

3 BEDROOM BEACHFRONT POOL VILLA



This spacious three-bedroom residence combines to make up this premier villa offering stunning sea views, with a living room, dining room, a private infinity pool and garden

Set on the 24-meter beachfront this vast three-bedroom pool villa offers stunning views of the gulf of Thailand. It features a spacious living area, dining room and kitchenette for in-villa dining. The master bedroom offers lovely sea views and large open plan bathrooms with double vanity basins, bathtub and outdoor shower. The second guest room also faces the sea view and the king-bed guest room has a garden view to the rear of pavilion. There's a private infinity pool and garden area with a sun terrace.

Key Fact

- Villa size is 580 m²
- 24-meter beachfront position
- Master bedroom with king-size bed featuring a private bathroom including double vanity basins and an outdoor bathtub
- Large living area with extra-large couches and comfy scatter cushions
- Panoramic sea view from master bedroom, twin queen-bed room and living area.
- Private infinity-edge pool
- Terrace with sun loungers



TYPE B

Total Area 568 SQ.M.

3 BEDROOM SEAVIEW POOL VILLA



1st Floor



2nd Floor

Larger families will love this wonderful lifestyle three-bedroom villa, with impressive sea views and a private pool.

This spacious three bedroom villa has a roof-top terrace and upstairs master bedroom offering ocean views. Two remaining guest bedrooms are on the ground floor with spacious living area, dining room and kitchenette for in-villa dining. It also comes with a private pool, sun-loungers terrace and sunken seating area.

Key Fact

- Villa size is 568 m²
- Spectacular sea view from master bedroom and roof-top terrace
- Each master bedroom has large open plan bathrooms with double vanities and sea-view outdoor bathtub
- Large living area with extra-large couches and comfy scatter cushions
- Private pool and terrace with sun loungers
- Located steps from the beach



TYPE C

Total Area 398 SQ.M.

2 BEDROOM SEAVIEW POOL VILLA



1st Floor

Two-bedroom villa ideal for families and friends has dining and living room and a beautiful garden pool.



2nd Floor

A very spacious two-storey villa with two bedrooms. The master bedroom which is located on the upper floor featuring panoramic sea view. It has a large open plan bathroom, double vanity basins, a bathtub and shower. The living and dining area is on the ground floor with private pool and terrace. The twin guest room is located in the rear pavilion and has a garden view.

Key Fact

- Villa size is 398 m²
- Spectacular sea view from master bedroom and terrace
- Master bedroom has a large bathroom with double vanities and outdoor bathtub
- Private pool and terrace with sun loungers
- Located steps from the beach



GROUND FLOOR - POOL ACCESS UNIT



UPPER FLOOR - SEA VIEW UNIT

TYPE D

Total Area 150 SQ.M.

DUPLEX SEAVIEW POOL VILLA

Experience this very spacious split-level villa with panoramic sea views and a 50-meter lap pool.

A very spacious two-level villa with two bedrooms, The master bedroom which is located on the upper floor featuring magnificent sea view and twin queen-bed room, on the ground floor, can access to 50-meter lap pool. Both also has a large open plan bathroom with double vanity basins, shower and bathtub. Each bedroom has its own terrace with sun loungers.

Key Fact

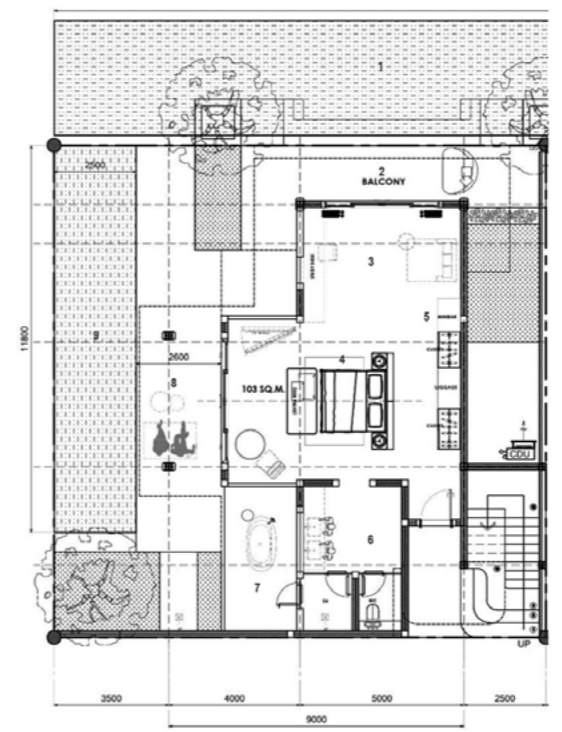
- Villa size is 150 m²
- Spectacular sea view from the upper floor
- Pool access from the ground-level bedroom
- Terrace with sun loungers
- Double vanity basins and large bathtub
- Located just steps from the beach



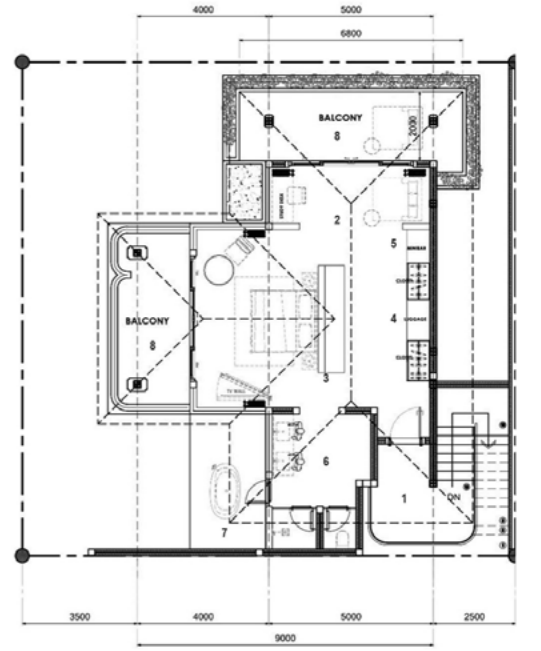
TYPE E

Total Area 200 SQ.M.

DUPLEX BEACHFRONT POOL VILLA



1st Floor



2nd Floor

Tropical beachfront villa with endless sea view, outdoor pool deck, and sea-facing bathtub.

Two-level villa is located on the beachfront cliff. Two master-bedroom suites, separated on the upper and ground floor, offer privacy with fantastic sea views. Both suites offer a spacious bathroom with double vanity basins and sea-facing bathtub. The private pool has a terrace with sun loungers.

Key Fact

- Villa size is 200 m²
- Absolutely beachfront
- Panoramic sea view
- Private infinity pool on ground floor
- Private terrace with sun loungers
- Large open plan bathroom with double vanities basins
- Sea-facing Bathtub and outdoor shower



THE DEVELOPMENT TEAM

DEVELOPER



LIV ASSET

QUALITY SHIFT

ARCHITECTURAL



INTERIOR

Bellman
design studio

LANDSCAPE

PROCESS
LANDSCAPE

BRANDING & CREATIVE

ARN BRANDING &
CREATIVE
ONE OF ARN CREATIVE STUDIO FAMILY.





BEACHFRONT LIVING
IN TROPICAL ESCAPE

OWN A RESIDENCE OF
ON THE MOST PRIVATE BEACH
IN THAILAND

15/5 Moo 5, Sai Thong, Bangsaphannoi, Prachuap Khiri Khan 77170
T : +66(0) 86 656 9798 | E : info@saairesidence.com

www.saairesidence.com